

# MONTHLY MEMBERSHIP PROGRESS REPORT

District 318 D

Results as of: 5/31/2024

GMT:

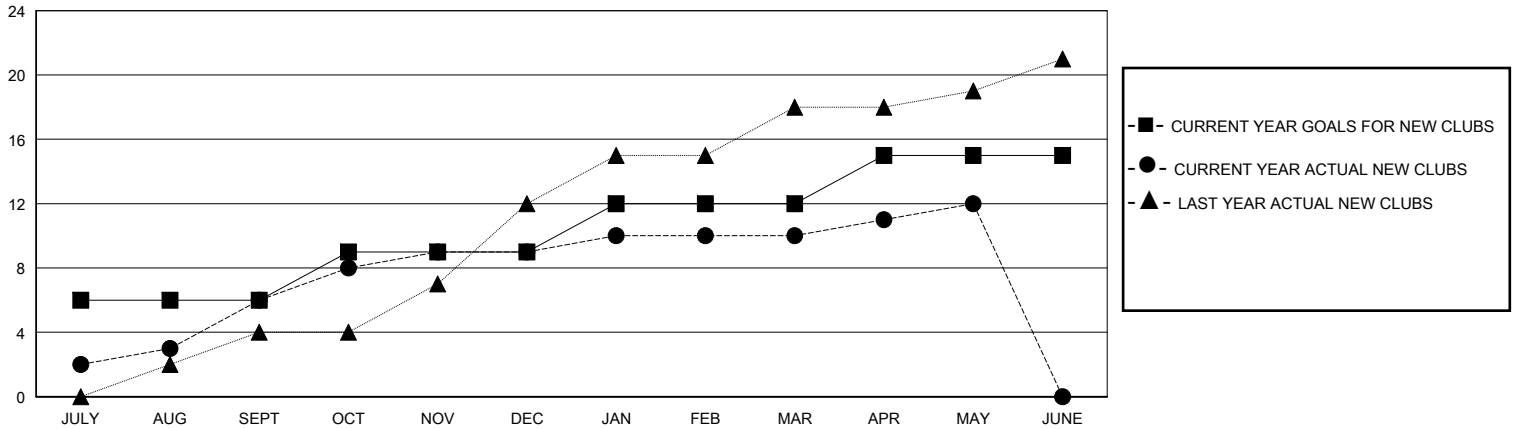
LOCATION INDIA

GMT CA

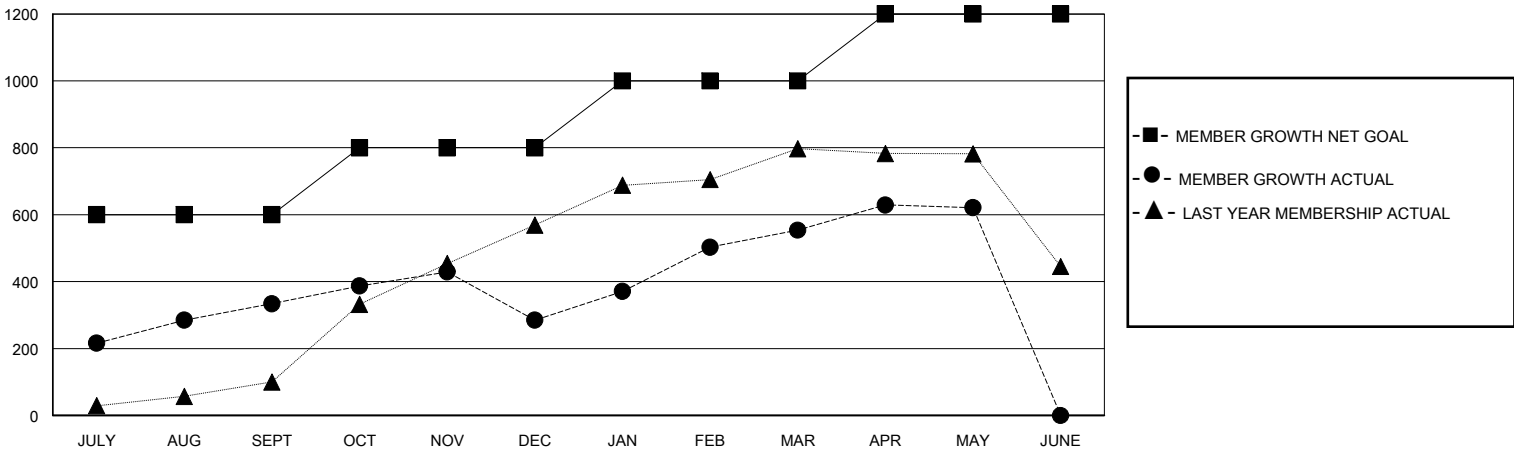
Clubs			
RESULTS FOR 2023-2024			
QUARTER	NEW CLUB GOAL	NEW CLUBS	DROPPED CLUBS
JULY/AUG/SEPT	6	6	0
OCT/NOV/DEC	3	3	4
JAN/FEB/MAR	3	1	0
APR/MAY/JUNE	3	2	0

Members			
RESULTS FOR 2023-2024			
QUARTER	MEMBER GROWTH NET GOAL	MEMBER GROWTH ACTUAL	DROPPED MEMBERS ACTUAL (including transfers)
JULY/AUG/SEPT	600	476	125
OCT/NOV/DEC	200	287	328
JAN/FEB/MAR	200	320	44
APR/MAY/JUNE	200	150	73

GOALS AND ACTUAL NEW CLUBS CUMULATIVE



GOALS AND ACTUAL MEMBERS CUMULATIVE



DROPPED CLUBS: 4

148 CLUBS OF 203 ADDED 1 OR MORE NEW MEMBERS

GENDER DISTRIBUTION

MALE 5,846 (81.23%)  
FEMALE 1,351 (18.77%)

DROPPED MEMBERS

DECEASED	20
CLUB CANCELLED	76
OTHER	474
<b>TOTAL</b>	<b>570</b>

[CLICK HERE FOR CUMULATIVE MEMBERSHIP DATA](#)

TOTAL FAMILY UNIT MEMBERS	2,295
FAMILY MEMBERS PAYING HALF DUES	1,194